



Frontier™ 5306

Mini Centrifuge



Powerful and Convenient Mini Centrifuge for Simple and Rapid Life Science Separation Applications!

The OHAUS Frontier 5306 is a powerful mini centrifuge for simple and rapid liquid separation. The Frontier 5306 includes an 8-position 1.5/2 mL tube rotor as well as a 4-position 8-strip PCR tube rotor that can accommodate 32 individual PCR tubes or 0.2 mL strip tubes. With the included adapters, 0.2 mL and 0.5 mL strip tubes can also be accommodated in the 8 position tube rotor, further increasing its versatility. Frontier 5306 also has a quick release design in which the rotors can be removed and installed without the use of any tools. This centrifuge provides quiet, safe, and easy operation for your everyday quick spin-down applications.

Standard Features Include:

- **A Quiet Motor and Rubber Base Assure Quiet Operation**—With a low voltage power input, quiet motor, and rubber base that absorbs vibrations, Frontier 5306 keeps operational noise to a minimum and reduces disruptions in the laboratory.
- **Multiple Protective Features Ensure the Safety of Centrifuge Operator**—Frontier 5306 has many safety attributes, including a low voltage power input, sturdy lid, and two safety switches which immediately stop the rotors should the lid open while in rotation. An imbalance sensor also stops the centrifuge if the rotors become imbalanced or sudden shock occurs, protecting the operator from being injured by the high-speed spinning rotors.
- **Simple One-Step Operation**—Frontier 5306 takes simple operation to a new level. Once the device is powered on, simply place your sample in the centrifuge, close the lid, and it will begin to rotate. Not even one button press is needed in order to separate your sample.

Frontier™ 5306 Mini Centrifuge

| Model | FC5306 | |
|---------------------------------|--|--|
| Rotor | Angle Rotor | Tube Bank Rotor |
| Rotating Speed Scope | 6000 rpm | |
| Centrifugal Force | 2000 x g | |
| Rotating Direction | Counterclockwise | |
| Maximum Capacity | 8 x 1.5 ml / 2 ml | 4 x 0.2 ml-PCR 8-tube bank |
| | | or 32 x 0.2 ml single centrifugal tube |
| Adapter | 0.2 ml / 0.5ml | — |
| Accelerating Time | ≤2 s | |
| Decelerating Time | ≤3 s | |
| Drive Mode and Motor | Direct drive, with low noise attributable to rolling bearing | |
| Power Supply | Input: 100-240V ~ 50/60Hz 1.5A Output: 24V 2.0A | |
| Dimensions (W x D x H) | 150 x 168 x 128 mm | |
| Net Weight | 1.1 Kg (including free-load angle rotor) | |
| Shipping Dimensions (W x D x H) | 216 x 305 x 194 mm | |
| Shipping Weight | 1.9 Kg | |

Standard Equipment

Mini centrifuge, AC adapter, angle rotor (8 x 1.5 ml / 2 ml), 0.2 ml tube bank rotor for PCR 8-tube bank, eight 0.5 ml adapters and eight 0.2 ml adapters, manual

Approvals

- **Product Safety:** IEC/EN 61010-1:2010, IEC/EN 61010-2-020:2006
- **Electromagnetic Compatibility:** FCC Part 15 Class B, ICES-001 Class B, EN 61326-1:2013, Class B, Basic environments, IEC 61326-1:2012, Class B, Basic environments

Rotors

Angle Rotor, 8 x 1.5 ml / 2 ml 30129559

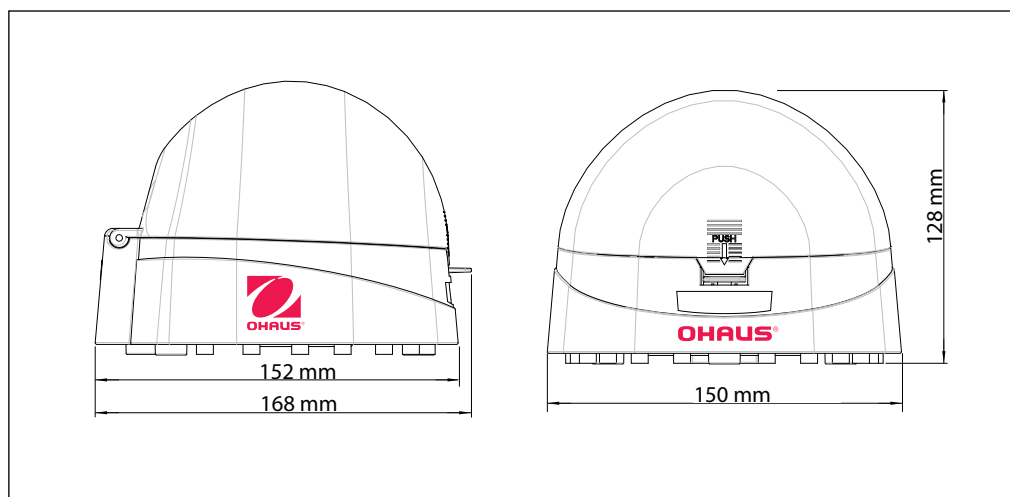
Angle Rotor, 4 x 0.2 ml PCR8 30129560

Accessories

Adapter for 0.2 ml Tube (8PCS/Package) 30129561

Adapter for 0.5 ml Tube (8PCS/Package) 30129562

Dimensions



OHAUS Europe GmbH

Im Langacher 44
8606 Greifensee
Switzerland

e-mail: ssc@ohaus.com

Tel: 0041 22 567 53 19

e-mail: tsc@ohaus.com

Tel: 0041 22 567 53 20

www.ohaus.com

With offices throughout
Europe, Asia, and
Latin America

*ISO 9001:2008

Registered Quality
Management System

